

# PELANGI

## Passive Radar Reflector

## PA230

### Combined Lightweight Top Mark and Radar Reflector



PA230 RADAR REFLECTOR AS PILE MARKER



PA230 shown here on PB2000 Buoy



**INDUSTRIAL MEMBER**  
**INTERNATIONAL**  
**ASSOCIATION OF**  
**LIGHTHOUSE**  
**AUTHORITIES**

### Lightweight High performance passive reflectors by Pelangi International Ltd to compliment buoy and beacon structures.

- Completely resistant to Marine environment with stainless steel interior and polyethylene housing.
- Combined Top mark & Radar reflector permits radar reflector to be mounted at highest focal height to aid identification.
- Lightweight permits PA230 to be mounted higher than convention without disturbing buoy stability.
- Lightweight allows lantern to be enclosed with thin support struts, which will not obscure the light.
- Coloured top mark removes the need for re-painting during buoy servicing. Colour restored by water jet cleaning only.
- Large top mark size @ 0.25M<sup>2</sup> permits easy identification of mark in daytime.
- Large radar equivalent echo of 19M<sup>2</sup> permits easy identification at night and poor visibility.
- No maintenance required to ensure radar performance.
- Good radar response, even when mounted on heeling buoy in bad weather.
- Good responses when viewed all round PA230 without any blind spots.

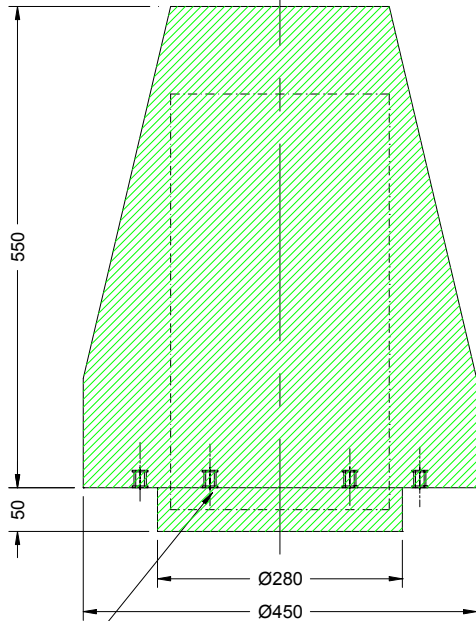
### OPTIONS

- Yellow in cone or can for special mark.
- IALA Buoyage B alternative colour shape combinations
- Spherical black or red/white also available

# PELANGI

## Passive Radar Reflector

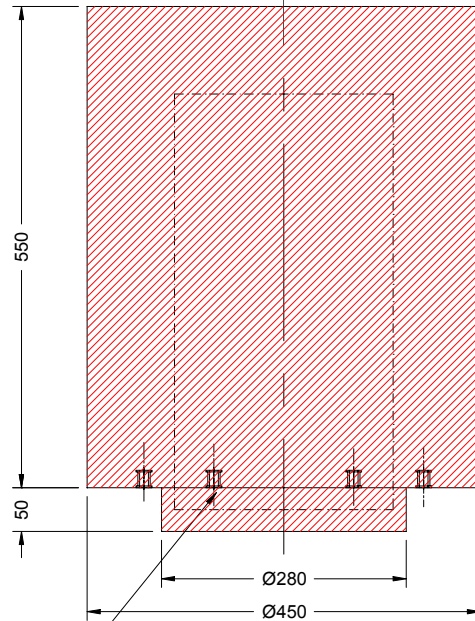
## PA230



6 x M10 INSERTS ON 320mm P.C.D.

**STARBOARD CONE - 5 KGS**

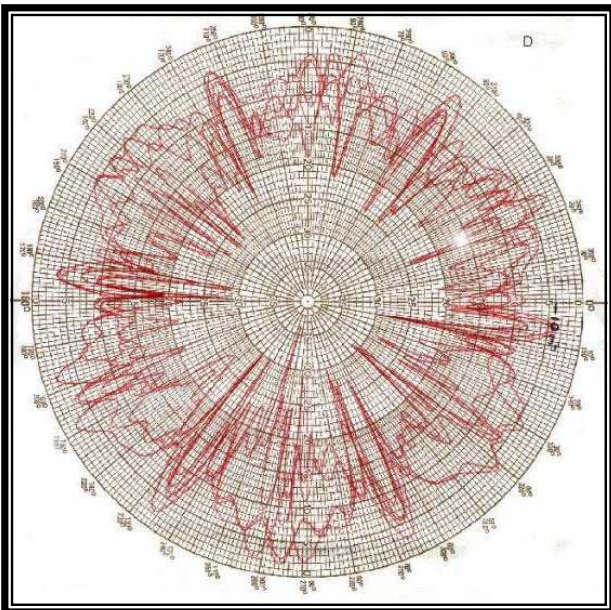
Can also be configured red I.A.L.A. B



6 x M10 INSERTS ON 320mm P.C.D.

**PORT CAN - 5.5 KGS**

Certified radar plot by DERA



PA230 radar reflector without outer case

