

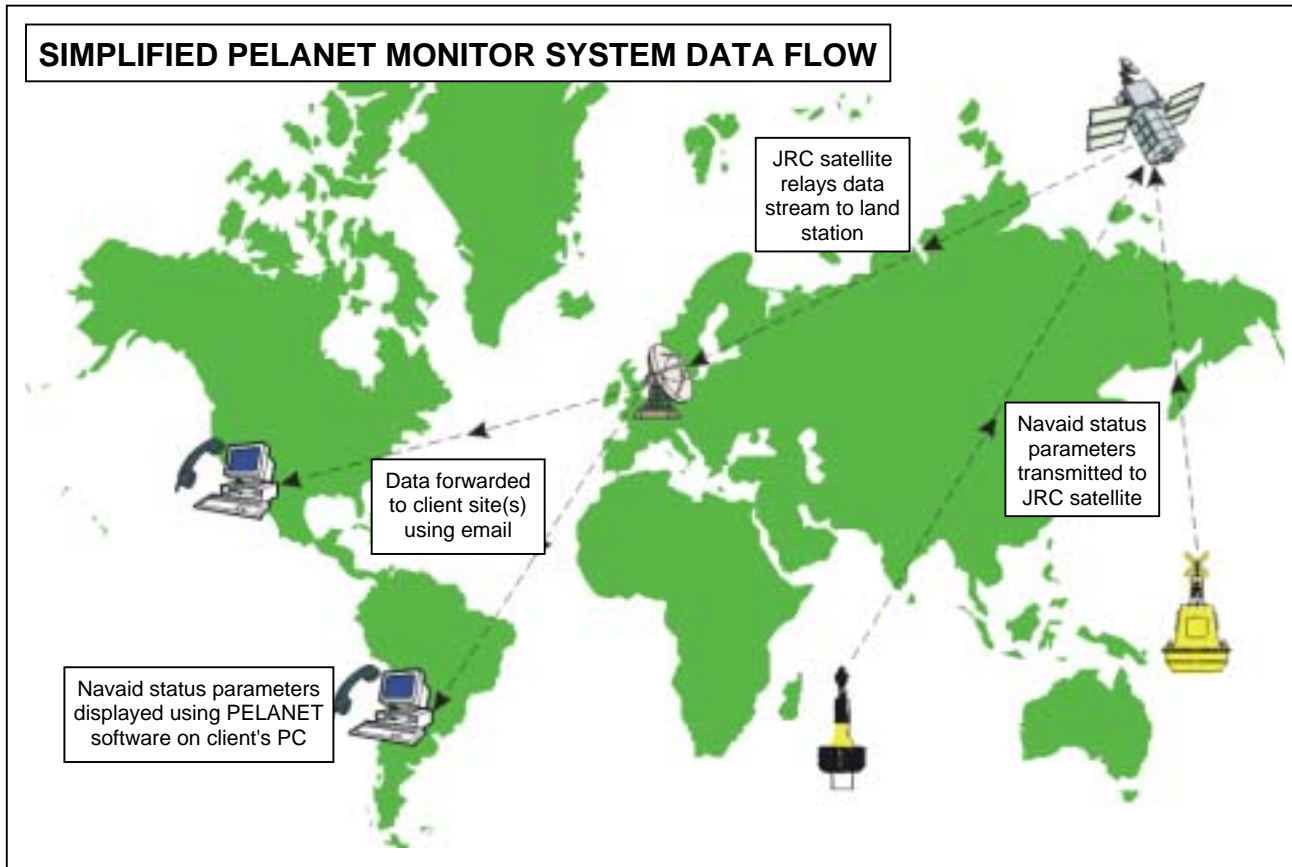
PELANGI

Pelanet

Master Station Layout

Compact remote monitoring system with very low power consumption easily fitted to existing aids to navigation.

Designed for direct connection to the Communicator flasher via satellite, VHF or modem connection for maximum versatility.



MASTER STATION:

- Operates on Windows 95/98 or NT
- System can run in the background either as clone for managerial purposes or authorised control.
- Connects via modem via internet without the need for an international telephone or via 9 way connector through COMs port with UHF/VHF radio.

REMOTE STATION:

- Low power consumption allows connection to existing power sources without the need to upgrade if interrogation kept to daily contact.
- Self contained telemetry box can be supplied for retro fitting on site to either buoys or beacons.

- Standard system supplied on CD for loading on customers PC after configuring with client's local charts and site photos.
- Use of JRC satellite enables monitoring around the world over distances greater than possible by UHF or VHF radio.
- Ideal for Port Authorities with a number of ports under their jurisdiction separated by great distances.
- Simultaneous collection of site parameters via Email which can be copied to each port manager and subcontractor responsible for their actual maintenance.
- Connects directly to COMMUNICATOR flasher without interface thus keeping physical size of remote monitoring unit to a very manageable size even for small buoy.

PELANGI

Pelanet

Master Station Layout

Level 1: Typical opening menu with satellite photo



Standard monitoring layout enables a pictorial layout utilising actual satellite photographs covering 180 Km x 180 Km. Assists Port Control to move around the programme in areas known to them.

Level 2: Satellite image showing sub-groups of Ports.

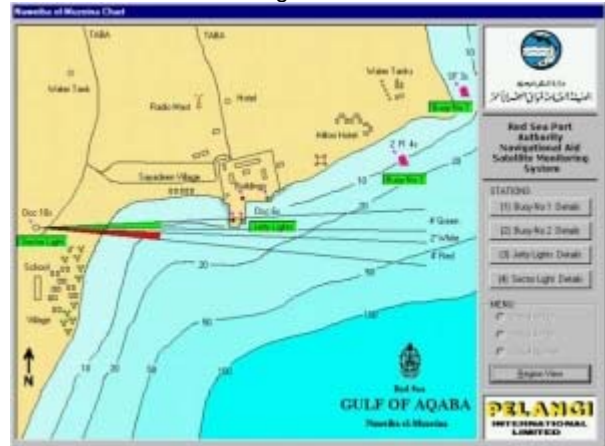


Level 3: Satellite image of selected port layout.



Dual links to each level using either active picture or menu buttons.

Level 4: Chart of port area showing navigational aids with live buttons indicating status.



Customer sets levels of "emergency" to appear always on top to alert operator to the changing status. Buttons change colour appropriately

Level 5: Actual site photographs confirm the station being monitored within a standard layout alongside the station's equipment and the active parameters being monitored.



Hidden buttons activated on picture to alert operator of changing condition. If monitored by satellite active latitude and longitude position movement alert for buoy monitoring included as standard with flashing "drift" alert.

Full history of each site in pull down menu.

