

PELANGI

POLYETHYLENE BUOY

PB1526-2426 series

Lightweight modular constructed buoy with Low Density Polyethylene (L.D.P.E.) "SOFT" float for medium to open sea duties.



PB2026 buoys shown here with 10 watt solar panels PL41 LED lanterns and PA12 radar reflector and top mark support frame.

Other Options include:

- **Stainless Steel lifting and mooring plates.**
- **PL125 and PL155 lantern with either LED, pre-focus lamps mounted on lampchanger or Bi-filament lamp light sources.**
- **Synchronisation via PELANET remote monitoring package using either Satellite or UHF radio linked by E mail to Port Control.**
- **Lightweight Polyethylene coated PA230 Radar reflector built into top mark.**
- **Non-slip coating available for float collar.**

Extremely lightweight, variable focal plane buoy weighing only 510-1020 kgs in service. Designed for Port Authorities with minimal lifting capabilities.

- 2 - Part modular float construction for space saving shipment costs.
- Rotationally moulded floats constructed from 10-11mm thick virgin polymers with additional thickness of up to 14mm in high load areas. Foam-filled to create robust floatation.
- "SOFT" float does not require fender and is resistant to mechanical abuse without damage.
- Float and day marks produced in L.D.P.E. with UV stable polymers to EU standards of 12 years to reduce maintenance costs of repainting.
- Day mark structure is self coloured to match float and can be supplied in red, green yellow, yellow and black combinations with CAN, cone, spherical or pillar shapes to I.A.L.A. standards for maximum flexibility.
- 4 mooring and 2 lifting eyes increase ease of buoy handling and offer maximum period between major overhaul as the twin bridle can be moved to opposite pair when the first set become worn.
- Steel work supplied galvanised as standard with addition options of hot blasted aluminium spray finished in 500 microns of coal tar epoxy resin. For extended life anodes can also be fitted.

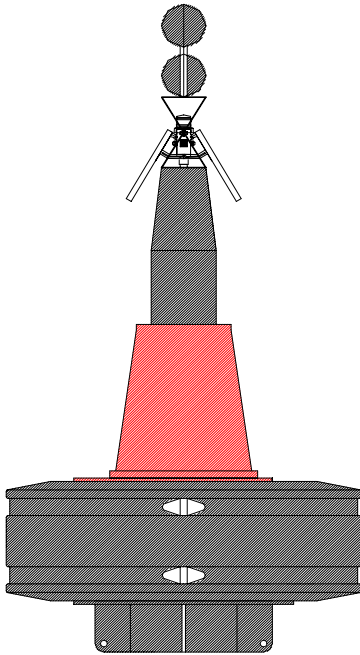


**INDUSTRIAL MEMBER
INTERNATIONAL
ASSOCIATION OF
LIGHTHOUSE
AUTHORITIES**

PELANGI

POLYETHYLENE BUOY

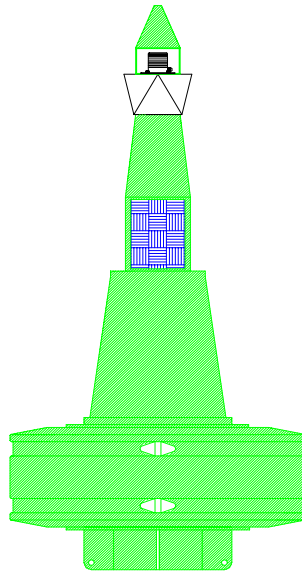
PB1526-2426 series



PB2426

**ISOLATED
DANGER**

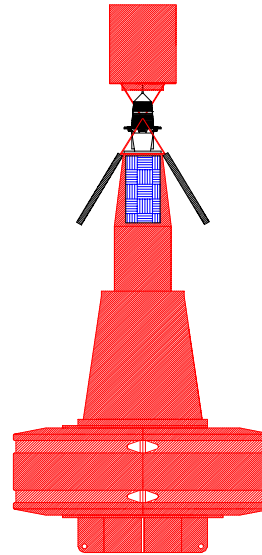
Example shown has PL43 LED lantern and PA12 radar reflector Inside superstructure



PB2026

**STARBOARD
LATERAL**

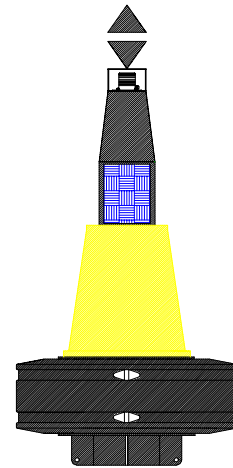
Example with PL125 L.E.D PA12 radar reflector lantern top mark and standard



PB1726

**PORT
LATERAL**

Example with PL155 filament lantern, solar & PA230 radar reflector inside top mark.



PB1526

**EAST
CARDINAL**

Example with PL125 L.E.D. lantern & standard solar interchangeable top mark.

Type	PB2426	PB2026	PB1726	PB1526
Site Conditions	Open	Open	Moderate to open	Partially sheltered
Diameter	2400 mm	2000 mm	1750 mm	1500 mm
Focal height - standard	2630mm	2630mm	2630mm	2630mm
- with SET extension	3430mm	3430mm	3430mm	3430mm
Typical Draught	680 mm	680 mm	680 mm	680 mm
Standard plate	10 mm	10 mm	8 - 10 mm	8 mm
Lifting eyes	2	2	2	2
Mooring eyes	4	4	4	4
Recommended chain	32-38 mm Open Link	28-32 mm Open Link	22-30 mm Open Link	22-26 mm Open Link
Reserve Buoyancy	1927Kgs	1259Kgs	865Kgs	520Kgs
Power source	Solar, Primary or Rechargeable Battery	Solar, Primary or Rechargeable Battery	Solar, Primary or Rechargeable Battery	Solar, Primary or Rechargeable Battery
Concrete Sinker weight	3.5 Tonnes (in water)	2.3 Tonnes (in water)	2.0 Tonnes (in water)	1.75 Tonne (in water)
Typical chain length	2-3 times depth	2-3 times depth	2-3 times depth	2-3 times depth
Standard Weight	1020Kgs	720Kgs	615Kgs	510Kgs