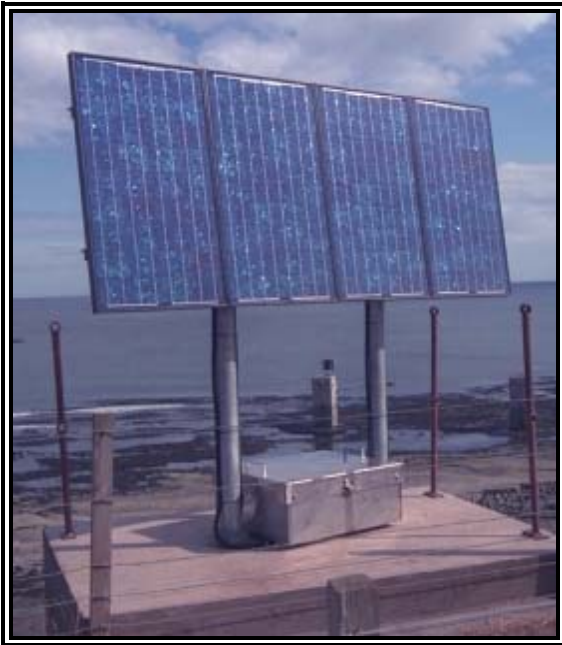


PELANGI

SOLAR PANELS

Fully weatherproof lightweight Solar Panels, suitable for buoy or beacon duties and temperature cycles of -40 to +90 degrees Celsius.



MSX RANGE

High performance non-regulated panels for power generation at lower sunlight levels to take advantage of winter sun conditions.

- Tempered, high transmissivity glass, capable of withstanding 25mm dia. Hail at 52mph.
- Large weatherproof terminal blocks capable of accepting the PR6 regulator internally without the need for additional enclosures.
- Compact square cells to reduce panel area and increase ease of installation on buoys.
- Individually tested and labelled for warranty purposes.
- Frame constructed from corrosion resistant anodized extruded aluminium for light weight.
- Designed to withstand 125mph winds when all mounting holes are utilised.

Top photo: Large solar system for heavy character.
Bottom photo: Self contained pile mounting units.

| Type | Watts (Nominal.) | Peak amps on load | Size LxWxD | Wgt kgs | Connection method |
|-------|------------------|-------------------|-------------|---------|-------------------|
| MSX20 | 20 | 1.19 | 424x502x50 | 3.0 | Junction box |
| MSX30 | 30 | 1.78 | 594x502x50 | 3.9 | Junction box |
| MSX40 | 40 | 2.37 | 767x502x50 | 5.4 | Junction box |
| MSX50 | 50 | 2.97 | 939x502x50 | 6.3 | Junction box |
| MSX60 | 60 | 3.56 | 1110x502x50 | 7.2 | Junction box |
| MSX80 | 80 | 4.75 | 1461x502x50 | 9.5 | Junction box |



PELANGI

SOLAR SYSTEMS

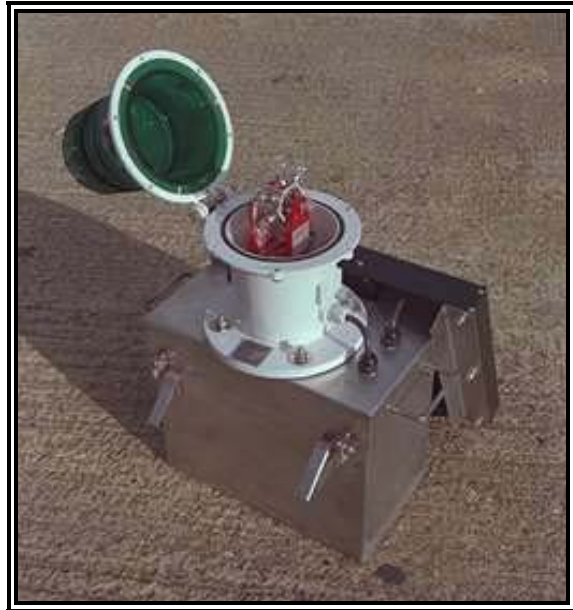
PS20/100 & PS30/100

Self-contained jetty end or pile marker solar system for direct mounting on top of pile. Ideal for locations with limited access that need to be lit by a minor beacon without mains power.



- Complete enclosure, supporting brackets and fixings manufactured in stainless steel for low maintenance.
- Discrete padlock mounted underneath panel for security whilst protected from the elements is available as an optional extra.
- Hinged lid permits easy access to lantern, battery and regulator without disconnection of system.
- System sized by Pelangi on customer's character, range and latitude by computer.
- Solar tilt angle set at 65 degrees.

- Will accept PL155, PL250, or our various LED Lanterns.
- Vented battery box houses maintenance free battery.



Shows PS20\100 with PL155 lantern and PA6.



PS20/100 showing easy access to battery.