

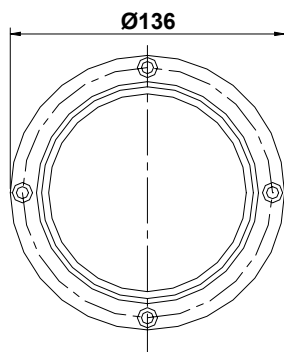
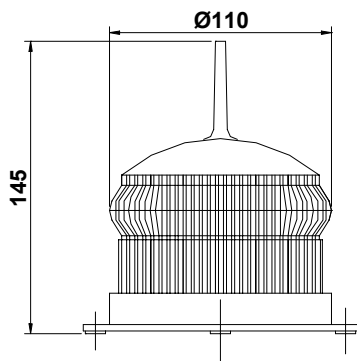
# PELANGI

L.E.D. LANTERN

PL83



The PL83 12Vdc LED Light head, version without solar system.



FIXING HOLES :- 4 HOLES Ø5  
ON A 124mm P.C.D.

The PL83 LED Marine Lantern has been designed for buoy or beacon applications for ranges of 1 to 4 Miles.

- Weighing only 600 grams the PL83 Light-head is easily mounted on small buoys or "scaffold pole" type piles.
- The PL83 can be programmed to any of 256 different flash characters via user accessible dip switches.
- Intensity can also be adjusted to achieve 1, 2, 3, or 4 miles range at T=0.74.
- The Lantern is Available in Red, Green, White, Yellow, & Blue (Please note your local Lighthouse Authority may not approve the use of a blue light unless considered for use within port limits).
- Wide vertical divergence of 9 degrees permits easy identification even when mounted on a heeling small buoy.

#### Options:

- 1) PL83 12VDC Light-head only.
- 2) PL83 Light-head with AC power supply.
- 3) PL83-4-26 Solar Beacon – see overleaf
- 4) Lighting Column to suit customer requirements.



INDUSTRIAL MEMBER  
INTERNATIONAL  
ASSOCIATION OF  
LIGHTHOUSE  
AUTHORITIES

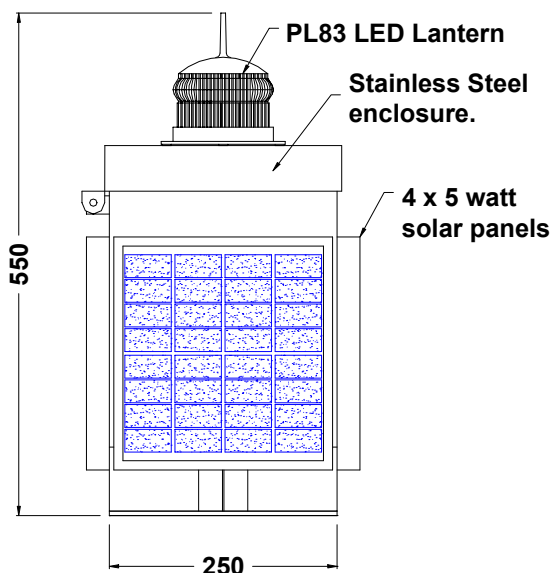
# PELANGI

## L.E.D. LANTERN

## PL83



The PL83-4-26R solar powered lantern system. 'R' version is supplied complete with optional integral high-performance tetrahedral Radar Reflector



FIXING HOLES:- 4 x Ø12  
ON A 200mm P.C.D.

The PL83-4-26 LED Solar Lantern is a self-contained solar powered beacon for buoy or beacon use.

- Minimum 20 days standby on 1/5 ratio character with no sun when deployed in the UK. This enables the unit to function reliably throughout the winter months.
- Compact, highly robust stainless steel enclosure offers maximum protection in a harsh marine environment.
- Optional PL83-4-26R version with integrated high-performance stainless steel tetrahedral radar reflector with no separate fixing required.
- 4 solar panels, so no need to orient to face due south, giving one solution for either land beacons or buoys.
- Built-in system switch will isolate system when held in stores.
- The Solar versions are available for all flashing or steady characters, and all regions. Version offered will depend upon local solar conditions.
- Lockable battery compartment, provided with a 26AH or 38AH battery.
- Part of the PELANGI family of stainless steel self contained solar units.
- Low weight of 22.5 to 26Kg, enabling the unit to be manhandled easily. Optional lifting eye can be provided if desired.



**INDUSTRIAL MEMBER  
INTERNATIONAL  
ASSOCIATION OF  
LIGHTHOUSE  
AUTHORITIES**