

PELANGI

Application Note 31295

Earagh- Aran Is. North

Lighthouse History :

The station was first Lit by **The Commissioners of Irish Lights** on 1st Dec 1857 with a flashing optic produced by Wilkins of London. In 1904 the optic was changed. This combined with a paraffin PV burner changed the character to Fl 15 sec (1.5 sec Flash) because of the diameter of the mantle.

In 1978 to increase the range to 23 miles the commissioners replaced the PV burner and optic with a revolving sealed beam array which reduced the flash length to 0.25 sec.

In 2006 Commissioners of Irish lights sought to reduce costs by changing the method of power generation. They replaced the high wattage lamp array with the already well proven **PRL400** as used on **Black Rock - Mayo, Old Kinsale, and Rockabill**.

The aim was to build on the experience gained using **PA2 lamp changers**. Supplementing that with a new **PA10-3** triple photo cell developed specifically for the commissioners, achieved a more accurately defined dusk start-up.



Earagh Lighthouse on Aran Islands North
Photo by Commissioners of Irish Lights .

Due to restrictions of space in the watch room it was decided to split the **HID** ballasts out from the main control panel and house them in a separate identical Stainless steel cubicle side by side with the control cubicle pictured opposite.

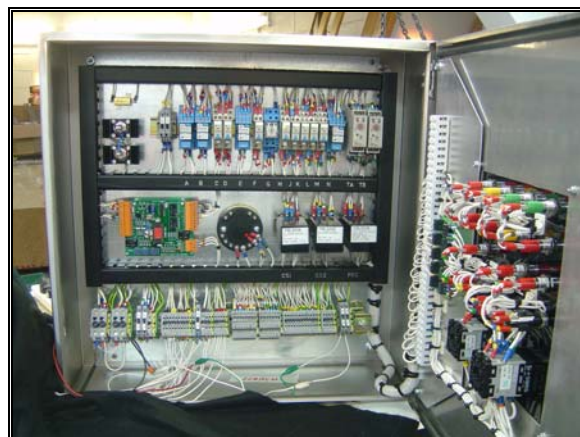
The new range of 20 miles was achieved with a much easier managed 35 watt Cdmt lamp.

Unlike previous sites of **Bull Rock** and **Black Rock** it was decided to move the station LED status indication on to the front of the panel. This improved the information available to the attendant without the need to open the cubicle.



Earagh Central Control Cubicle

As before the central cubicle served as the main light monitor point. This in the event of problems provided stand-alone failsafe switching to the emergency light and direct connection to the central monitor system which monitored status.



**INDUSTRIAL MEMBER
INTERNATIONAL
ASSOCIATION OF
LIGHTHOUSE
AUTHORITIES**